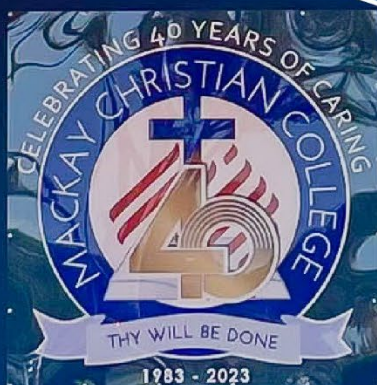




2024

ANNUAL REPORT



Mackay Christian Colleges Ltd
t/a Mackay Christian College

Providence Primary Campus
📍 17 Ambrose Way, North Mackay Qld 4740

King's Park Secondary Campus
📍 9 Quarry Street, North Mackay Qld 4740

☎ (07) 4963 1100 | ✉ mcc@mccmky.qld.edu.au
🌐 mcc.qld.edu.au | 📦 PO Box 3215, North Mackay Qld 4740

College Sector

Independent – multid denominational

College Address

Providence Primary Campus is located at 17 Ambrose Way, North Mackay. It serves Primary students from Kindergarten to Year 6. A registered Outside School Hours Care is also offered to the community.

King's Park Secondary Campus is located at 9 Quarry Street, North Mackay. It serves Secondary students from Year 7 to Year 12.

College Mission and Vision

Our Vision is for an independent Christian college providing excellent, Christ-centred learning opportunities that encourage the fulfilment of God's purposes.

Our Mission: The College aims to provide Christ-centred education that assists in revealing God's personal plan for each student from Pre-Prep to Year 12 through equitable, excellent learning opportunities that develop resilient, confident, creative and successful lifelong learners who make a positive impact in their world.

Our Aim: 'Christian Education on Purpose'.

"For we are God's masterpiece. He has created us anew in Christ Jesus, so we can do the good things He planned for us long ago." (Ephesians 2:10, NLT)

Our Motto: 'Thy will be done'.

Mackay Christian College CLEAR Values

Christlikeness
Learning
Excellence
Attitude
Respect

Total Enrolments

923 (including Kindergarten)

Characteristics of the Student Body

463 Female, 460 Male, 75 Indigenous

Year Levels Offered

Kindergarten

Primary: Prep to Year 6

Secondary: Years 7 to 12

Coeducational or Single Sex

Coeducational

Parental Involvement

MCC partners with parents/carers to assist with their child's development. Early each year, parents/carers are invited to a Prep to Year 6 'Meet the Teachers' and a Years 7 to 9 'Meet and Greet'. Parents/carers new to the College are invited to a coffee and cake afternoon tea.

Parents/carers of primary students are encouraged to read with their children at the start of each day. Parents/carers are also welcome to volunteer to assist with preparing and serving food at the College tuckshop facilities.

Parent/Carer-Teacher meetings are held throughout the year.

Student Reports to parents/carers are sent out twice per year for Primary and up to four times per year for Secondary.

Contact Person for Further Information

Dr Lesley Tunnah
College Principal

Email:
mcc@mccmky.qld.edu.au

College Website:
<https://mcc.qld.edu.au/>

College Income Broken Down by Funding Source

<http://www.myCollege.edu.au/>

Curriculum

The College's Mission is framed by our Vision of a Learner which aims to develop students who are self-directed strategic producers, responsive communicators, creative reflective investigators, empathetic servant leaders and resilient problem solvers. Skills to develop these aspects are woven into the curriculum of the College.

We aim to provide a Christian education that is based upon revealing each child's God-given gifts and talents and encouraging them to grow and develop as unique individuals. To assist this, the curriculum offered is based upon the Australian Curriculum and the QCAA syllabuses while also embedding a Christian World View.

The Primary curriculum incorporates all areas defined by the current Australian Curriculum including Content Descriptors and Achievement Standards.

The Arts, Technologies and Languages are presented as learning progressions.

Physical Education and Health are taught and assessed by a specialist teacher with additional physical activity presented by the classroom teacher.

STEM and Cultural Arts are also presented by specialist teachers.

The Secondary Years 7 to 10 curriculum incorporates both core subjects (English, Mathematics, Science, Humanities and Health & Physical Education) and a wide selection of specialist electives.

Secondary Years 11 & 12 undertake a two-year course of study of six subject choices which aim to progress students into a desired career path. Certificate qualifications may be incorporated into some areas of learning.

Woven through all year levels from Kindy to Year 12 is the support of Learning Enrichment. This team specialises in recognising the learning needs of students and providing teaching strategies and Teacher Aides, where necessary, for students who experience learning difficulties.

Extracurricular Activities

In addition to presenting accredited curriculum, the College provides opportunities for students to become involved with speciality teams and groups. These include the Agricultural Centre's Cattle Show Team and the Trade Training Centre's trade pathways options, as well as their Formula One High School Program. The Creative Academy offers a dynamic instrumental music program including choirs, concert bands, string ensembles and the jazz ensemble as students progress through Primary to secondary. Classes are tutored by specialist private tutors with quality instruments available for hire.

For those who enjoy competitive sport, the Sports Coordinator organises a variety of teams that receive coaching and then become involved in inter-school competitions. These sports activities foster teamwork, skill development and sportsmanship.

Social Climate

As well as developing knowledge and skills through curriculum subjects and extra-curricular activities, the College aims to develop each child's character using the CLEAR values as a framework.

The foundation of this development is in challenging students to become self-responsible and resilient through the acceptable and appropriate choices they make. To rob students of these opportunities is to develop a victim mentality and the notion that they will always need someone to be a 'carer' or 'parent' to them. Unfortunately, this can have implications for their success as an adult carrying out adult responsibilities.

The Primary *Bridge Builders* program focusses upon conflict resolution and how to deal with bullying. The Year 5 *PACE Yourself* is a Leadership Program that allows students to become *Bridge Builders' Mediators*.

Both Primary and Secondary students have access to the RTLC (Ready to Learn Classroom) where discussions about inappropriate behaviour allow students time to reflect upon how they might change their behaviour in future.

Students also have access to qualified counsellors who communicate with parents/carers and refer students to outside agencies if necessary.

In 2025, it is planned to introduce CLEAR, a social-emotional learnings course for Years 7 to 12 based upon Program Achieve and aspects of Biblical character expectations.

Student wellbeing support is provided by a pastoral care team including Heads of Pastoral Care on both campuses, House Family Coordinators and a qualified Youth Support Counsellor on both campuses. Students are also supported by a qualified youth support College Chaplain.

Staffing Information and Professional Development Activity

Staff Composition, including Indigenous staff

Mackay Christian College (MCC) is an Equal Opportunity Employer.

In 2024, MCC employed 87 teaching staff of which 23 were part-time.

We employed 147 support staff of which 118 were either part-time, term time or casual.

MCC employed nine Indigenous staff.

Qualifications of all Teachers

Qualification	Number of classroom teachers and College leaders at the College who hold this qualification
Doctorate or higher	1
Masters	21
Graduate Diploma	12
Graduate Certificate	4
Bachelor's Degree	108
Associate Diploma	2
Diploma	24
Certificate	18

Average staff attendance for the College, based on unplanned absences of sick and emergency leave periods of up to five days:

Number of Staff	Number of School Days	Total Days Staff Absences	Average Staff Attendance Rate
87	18,349	630	96.6%
For permanent and temporary classroom teachers and College leaders, the average staff attendance rate was 96.6% in 2024.			

Proportion of teaching staff retained from the previous year:

Number of permanent teaching staff at end of previous year	Number of these staff retained in the following year (the program year)	% retention rate
90	66	73%
From the conclusion of 2023, 73% of staff were retained for the entire 2024 College year.		

Expenditure on and Teacher Participation in Professional Development:

a) The College participated in a wide range of teacher professional learning activities with a cost of \$78,910.

Total Number of Teachers	Total expenditure on teacher PD (as recorded in Financial Questionnaire)	Average expenditure on PD per teacher
87	\$78,910	\$907
The proportion of the teaching staff involved in professional development activities during 2024		97%

b) Teacher Participation in Professional Development

Description of PD activity	Number of teachers participating in activity
ACS Leadership Summit	2
Bridge Builders Staff Workshop	30
Cath Edu - Autism Centre of Excellence Teacher Workshop	2
Cath Edu - The Responsible Thinking Process	4
Connect N Grow	1
F/E and Fire Warden Training	12
First Aid and CPR Training	62
Food Safety Supervisor Training	1
Godwin Consulting Coaching	15
Godwin Consulting Focused Wellbeing Team Training	8
Godwin Consulting Full Staff Retreat	81
Godwin Consulting LoSoP School Representative Program Training	1
ISQ Education in AI Seminar	13
ISQ Events Curriculum Leaders	2
ISQ Mathematics Masterclass	1
ISQ Principal's Briefing - NSSAB Educational Program Compliance	1
LawSense Dealing With Difficult Parents	2
LawSense Managing Student Disability – Adjustments, Behaviour, Learning & Discipline	1
LawSense Privacy, Note-Taking and Record Keeping in Schools	4
LawSense School Enrolment Workshop	1
Lead with Courage - Dare to Lead Face-to-Face Mackay	1
Leadership Mentoring	1
Micromelon Robotics	1
QUT Arts Boot Camp	1
Science with Mat Biology Genetics Day	1
Seizure Management Training	6
Sounds-Write Online Training	9
SPELD Decoding Decodable Texts: How to select decodable texts for your readers	1
SPELD The Daily Review: where the real learning happens!	1

Key Student Outcomes

The average attendance rate for the whole College as a percentage in 2024 was 96.88%.

Average Student Attendance Rate for Each Year Level

Year Level	Average Attendance in 2024	Year Level	Average Attendance in 2024
Kindergarten	91.35%	Year 6	97.27%
Prep	98.39%	Year 7	96.83%
Year 1	97.64%	Year 8	97.71%
Year 2	98.70%	Year 9	97.07%
Year 3	97.53%	Year 10	96.94%
Year 4	98.16%	Year 11	95.73%
Year 5	97.64%	Year 12	95.32%

Non-Attendance

An explanation is required from parents/carers for all student absences. For parent/carer convenience, the College provides a dedicated phone line, an email link on our website and access via our online parent platforms, 'TASS Parent Lounge' and 'Parent Orbit' App, for reporting absences.

Parents/carers are required to acknowledge all unexplained absences in TASS Parent Lounge/Parent Orbit App. If a student is absent for three consecutive days or more without notification, the College will follow up with parents/carers via phone and email.

Students may have their enrolment withdrawn by the College due to unjustifiable non-attendance. Parents/carers are notified of this in writing via email and registered letter.

NAPLAN Results for Years 3, 5, 7 and 9 in 2024

NAPLAN Dimension	Year Level	Mean Score (MCC)	Mean Score (Queensland)	Percentage of students above threshold for students needing additional support
Reading	3	369	393	83.3%
	5	461	485	90.6%
	7	514	525	89.6%
	9	559	554	91.4%
Writing	3	395	404	94.4%
	5	466	471	92.2%
	7	519	527	87%
	9	571	560	91.4%
Spelling	3	367	391	84.9%
	5	467	477	90.6%
	7	528	532	89.5%
	9	566	560	98.3%
Grammar and	3	376	398	81.1%
	5	463	492	85.9%
	7	521	529	84.2%
	9	534	548	86.2%
Numeracy	3	380	396	92.5%
	5	472	481	90.6%
	7	539	530	97.2%
	9	553	554	96.5%

Apparent Retention Rate Years 10 to 12

Year 12 student enrolment as a percentage of the Year 10 cohort is 75.38%.

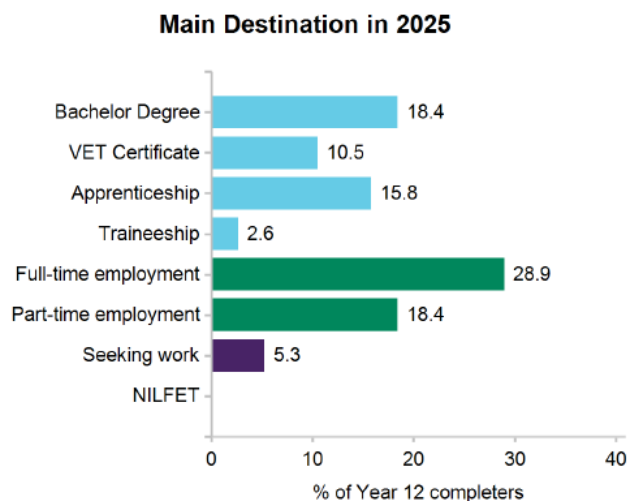
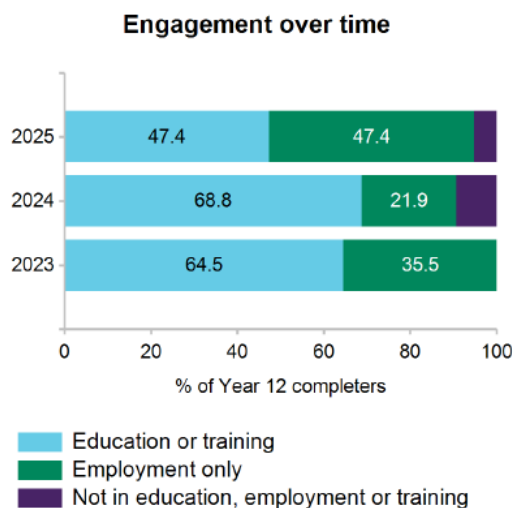
Year 12 Outcomes

Outcomes for our Year 12 cohort 2024	
Number of students awarded a Secondary Education Profile (statement)	48
Number of students awarded a Queensland Certificate of Individual Achievement	1
Number of students who received an Australian Tertiary Admission Rank (ATAR)	17
Number of students completing or completed a College-based Apprenticeship or Traineeship (SAT)	6
Number of students awarded one or more Vocational Education and Training (VET) qualifications	35
Number of students awarded a Queensland Certificate of Education at the end of Year 12	45
Number of students awarded an International Baccalaureate Diploma (IBD)	0
Percentage of Year 12 students who received an ATAR or an IBD	35%

Percentage of Year 12 students who completed a SAT or VET qualification	85%
Percentage of Year 12 students who were awarded a QCE qualification	94%
Percentage of University {Queensland Tertiary Admissions Centre (QTAC) applicants receiving a tertiary offer	71%

Post-College Destination Information

The below summary is of the post-College destinations of students from MCC who completed Year 12 and gained a Secondary Statement in 2024. The results are from the Year 12 Completers Survey, which is conducted approximately six months after students have completed Year 12.



University Offers for our 2024 Graduates

James Cook University (JCU)	Bachelor of Laws Bachelor of Engineering (Honours) Bachelor of Nursing Science Bachelor of Biomedical Science Bachelor of Business
Central Queensland University (CQU)	Bachelor of Arts Bachelor of Nursing Bachelor of Education (Primary) Bachelor of Occupational Therapy
Griffith University	Bachelor of Laws/Bachelor of Commerce
University of Queensland (UQ)	Bachelor of Science/Bachelor of Arts